

LANmark-OF Sliding Patch Panels

LANmark-OF Patch Panel Snap-In Sliding White

Nexans ref.: [N441.203](#)

New fibre optic snap-in patch panel from Nexans, bringing significant improvements resulting in better customer experience when fibre optic networks have to be deployed.

Description

Features

Enhanced sliding mechanism

- System based on wheels enables better opening/closing
- Base plate 100% removable improving installation practices

Reinforced front fixation

- 3 possible positions for the front: flush, flat or recessed
- Fully stable, no risk of movement when patching

Extended cable management

- Multiple entries to provide maximum flexibility
- Accommodates both cable glands as well as tie-wraps
- 2 Gland sizes: 20mm and 25 for large cables

Improved Splice tray handling

- Dedicated Stud attached to the base plate facilitates installation
- Maximum number of trays: 4

Professional Better Look and feel

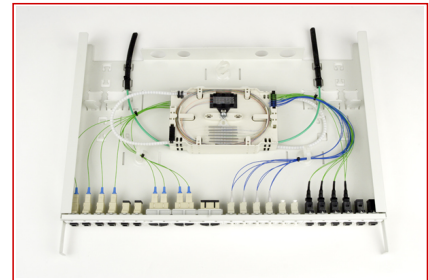
- Fully painted
- 2 version available: Black (N441.204) or White (N441.203)

- Includes four sixpack modules
- Accommodating 24 SC, 24 MTRJ or 48 LC connectors
- Inner sliding to respect bending radius of patch cord.

Compatibility

Suitable for tight buffer cables (direct termination) or Loose tube cables using Splice Cassette. Accomodate perfectly Pre-terminated assemblies by means of bendable plates

Accepting the entire range of LANmark-OF snap-in adapters: LC, MT-RJ, SC or DSC. Supports up to 48 fibres when Small Form Factors (SFF) adapters are used



LANmark-OF

Standards

International IEC 811-5-1

LANmark-OF Sliding Patch Panels

LANmark-OF Patch Panel Snap-In Sliding White

Installation

- 1 U
- 19" width
- Delivered with modular sixpack-type faceplate
- Accommodates 24 duplex LC, 24 MT-RJ, 24 single SC or 12 duplex DSC snap-in adapters
- 2 front positions : flush or recessed
 - when the patch panel is installed "flush" the distance between the back of the panel and the rack is 29.7cm
 - when the patch panel is installed "recessed" the distance between the back of the panel and the rack is 32.1 cm
- Supports use of tie-wraps as well as cable glands

Characteristics

Dimensional characteristics	
Heightunit	1 U
Width	19 in